

< M E M O >

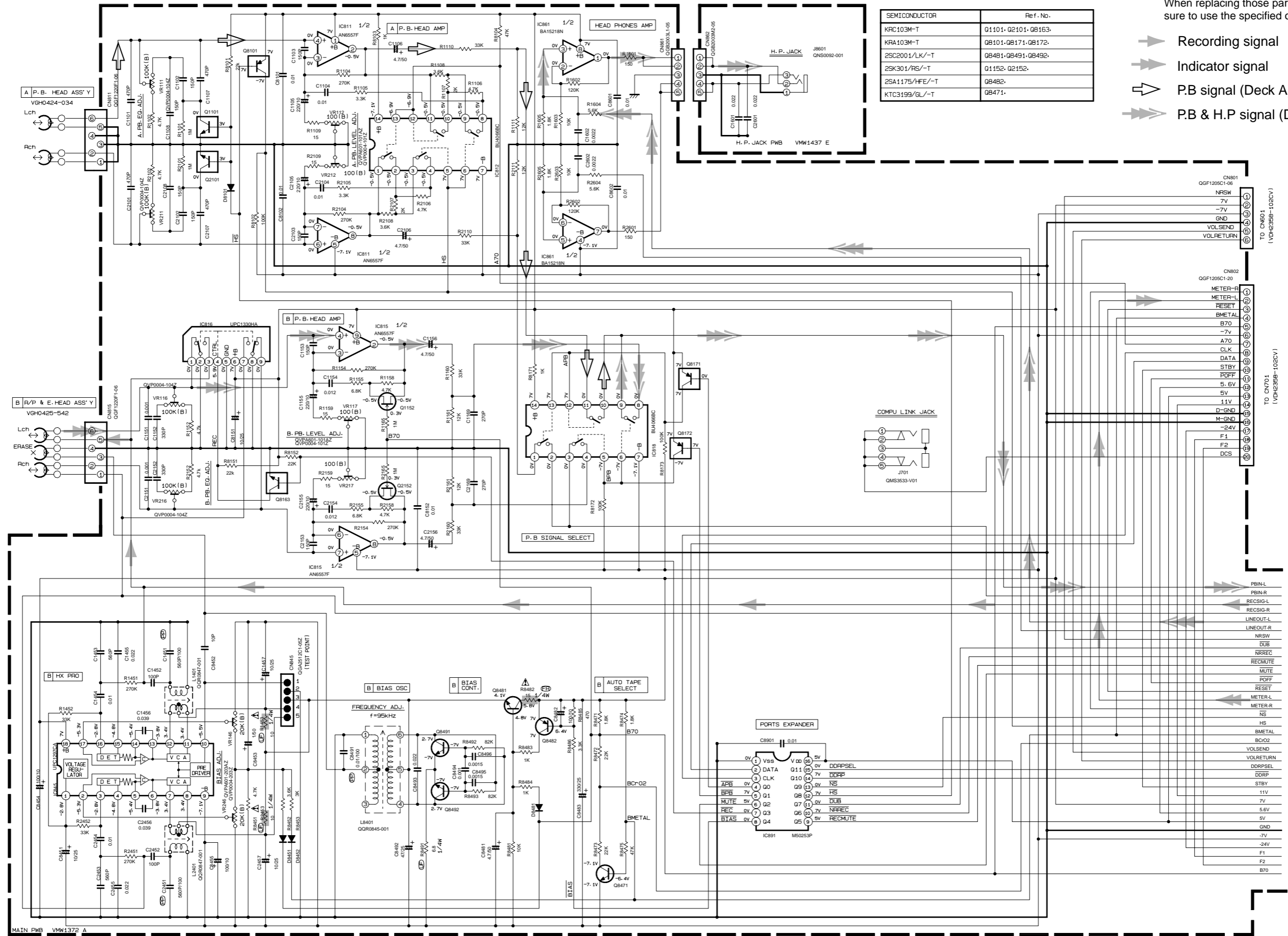
# Standard schematic diagrams

## Equalizer & headphone amp circuit

▲ Parts are safety assurance parts. When replacing those parts make sure to use the specified one.

- ➔ Recording signal
- ➔ Indicator signal
- ⏏ P.B signal (Deck A)
- ➔ P.B & H.P signal (Deck B)

SEMICONDUCTOR	Ref. No.
KRC103M-T	Q1101, Q2101, Q8163.
KRA103M-T	Q8101, Q8171, Q8172.
25C2001/LK/-T	Q8481, Q8491, Q8492.
25K301/RS/-T	Q1152, Q2152.
2SA1175/HFE/-T	Q8482.
KTC3199/GL/-T	Q8471.



Note/s/T235812AV.001  
VDH2358-102AV\_1/1

Dolby circuit & power circuit

SEMICONDUCTOR	Ref. No.
KPC103M-T	Q1252, Q2252, Q1252, Q2252, Q8351, Q8501, Q8503
KRA103M-T2	Q8251, Q8352, Q8353, Q8502, Q8504, Q913
KTC3199/CL/-T	Q1251, Q2251
2SA1175/HFE/-T	Q8511
KTC3203/OV/-T	Q1251, Q2251, Q1511, Q2511
2SB772/QP/-T	Q903
2SD882/QP/-T	Q901, Q909
2SD468/BC/-T	Q912, Q915
2SB647/CD/-T	Q905
2SC3576-JVC-T	Q907, Q908

5

4

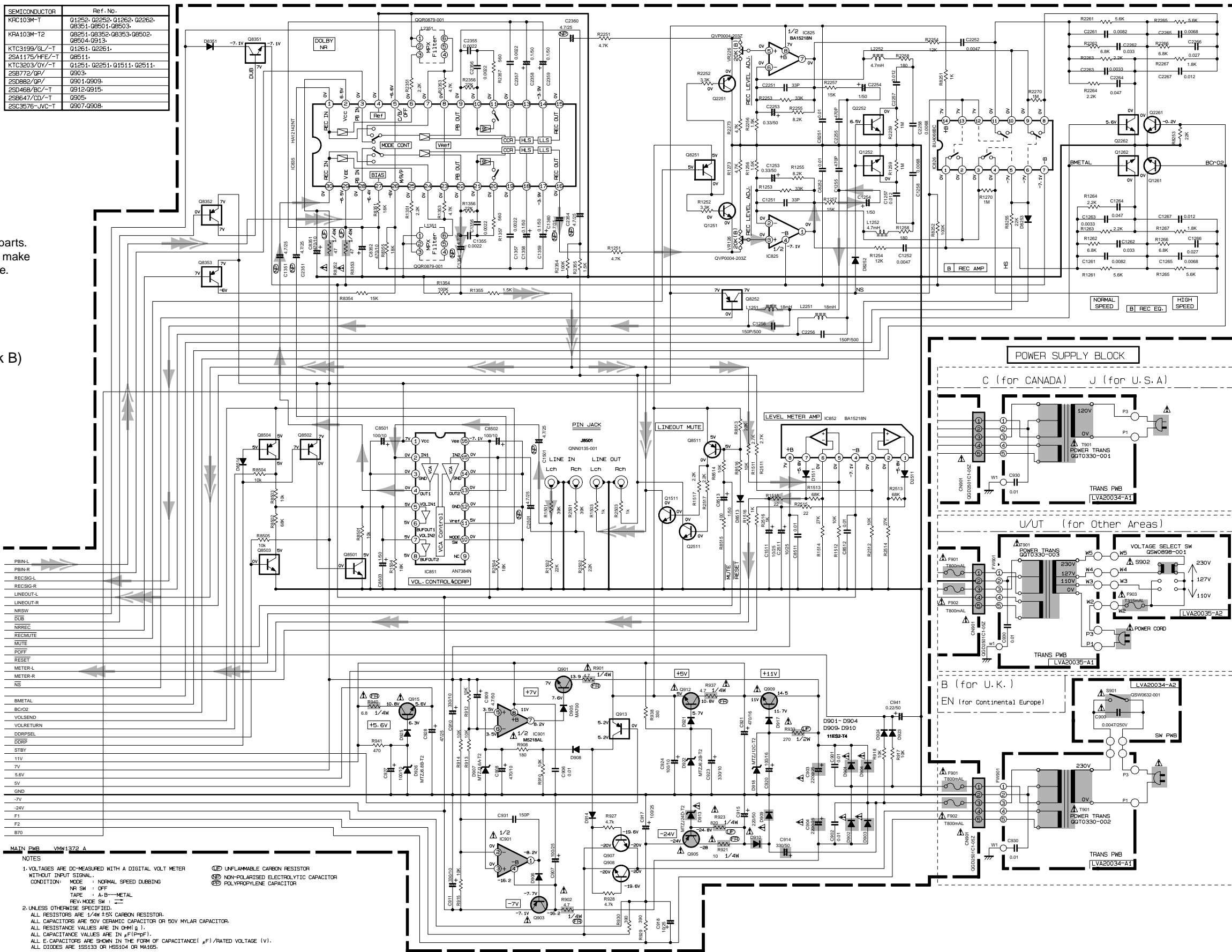
3

2

1

▲ Parts are safety assurance parts. When replacing those parts make sure to use the specified one.

- ➔ Recording signal
- ➔ Indicator signal
- ➔ P.B & H.P signal (Deck B)



- PBIN-L
- PBIN-R
- REC9G-L
- REC9G-R
- LINEOUT-L
- LINEOUT-R
- NR5W
- DUB
- NRREC
- REC MUTE
- MUTE
- POFF
- RESET
- METER-L
- METER-R
- NS
- BMETAL
- BC02
- VOLSEND
- VOLRETURN
- DRPSEL
- DRP
- STBY
- 11V
- 7V
- 5.6V
- GND
- 7V
- 24V
- F1
- F2
- B70

NOTES

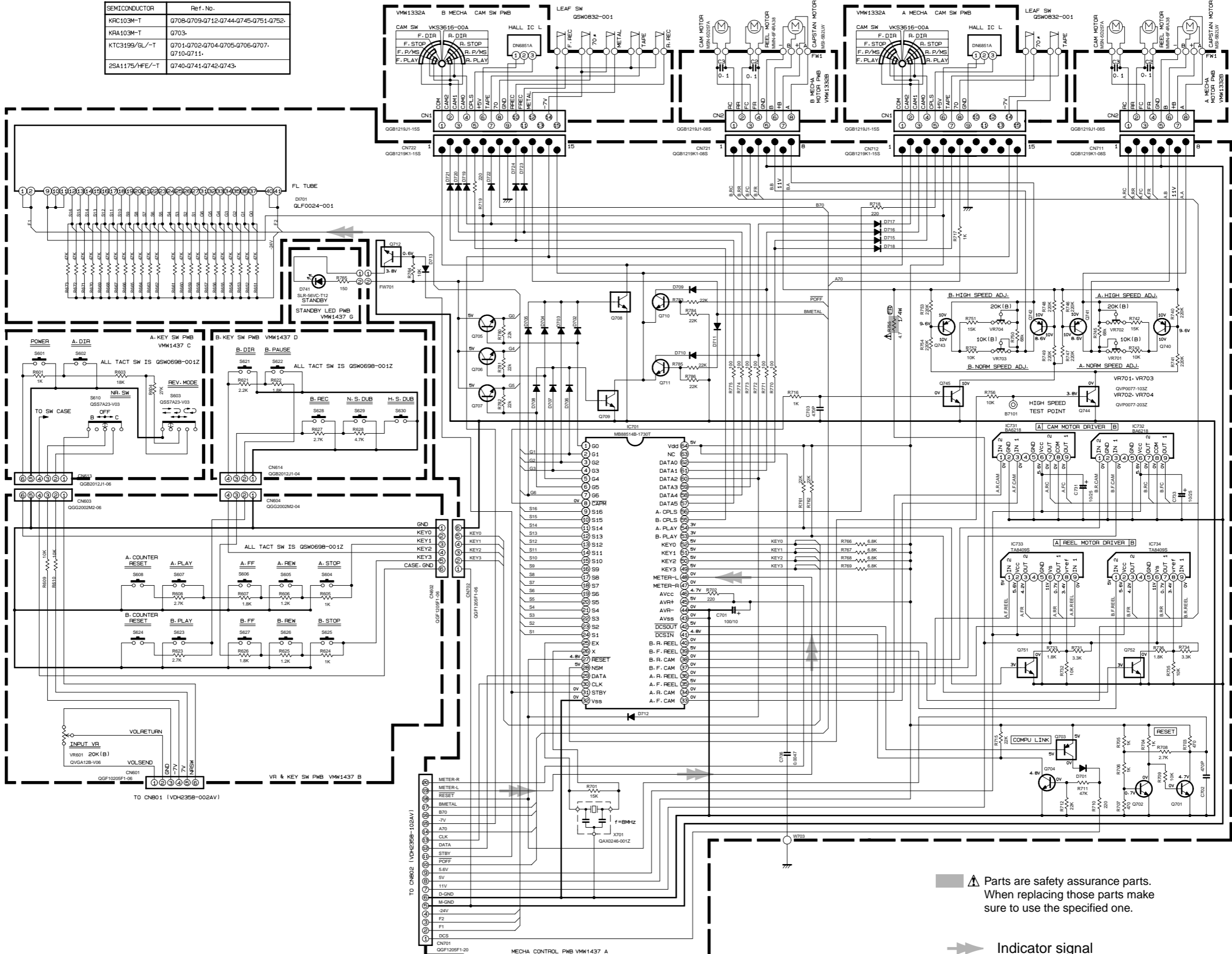
1-VOLTAGES ARE DC-MEASURED WITH A DIGITAL VOLT METER WITHOUT INPUT SIGNAL.  
 CONDITION: MODE : NORMAL SPEED DUBBING  
 NR SW : OFF  
 TAPE : A-B-METAL  
 REV-MODE SW : OFF

2-UNLESS OTHERWISE SPECIFIED,  
 ALL RESISTORS ARE 1/4W ±5% CARBON RESISTOR.  
 ALL CAPACITORS ARE 50V CERAMIC CAPACITOR OR 50V MYLAR CAPACITOR.  
 ALL RESISTANCE VALUES ARE IN OHM (Ω).  
 ALL CAPACITANCE VALUES ARE IN μF (μF).  
 ALL E-CAPACITORS ARE SHOWN IN THE FORM OF CAPACITANCE (μF) / RATED VOLTAGE (V).  
 ALL DIODES ARE 1SS133 OR HSS104 OR MA165.

UNFLAMMABLE CARBON RESISTOR  
 NON-POLARISED ELECTROLYTIC CAPACITOR  
 POLYPROPYLENE CAPACITOR

■ Display & Mecha control circuit

SEMICONDUCTOR	Ref. No.
KRC103M-T	G708-G709-G712-G744-G745-G751-G752
KRA103M-T	G703
KTC3199/GL/-T	G701-G702-G704-G705-G706-G707-G710-G711
ZSA1175/HFE/-T	G740-G741-G742-G743



▲ Parts are safety assurance parts. When replacing those parts make sure to use the specified one.

➔ Indicator signal

Note/s/VT235812CV  
VDH2358-102CV\_1/1

# Printed circuit boards

■ Main board

◆ Main board

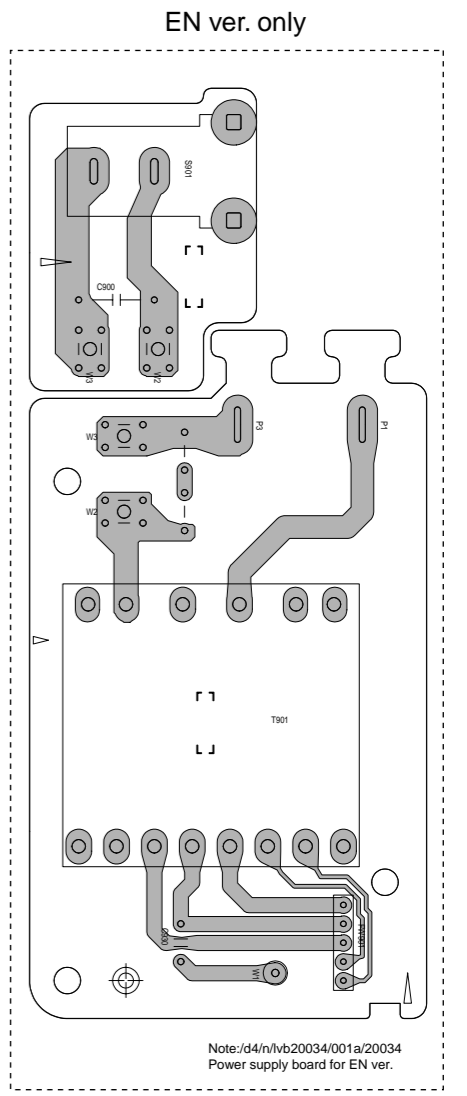
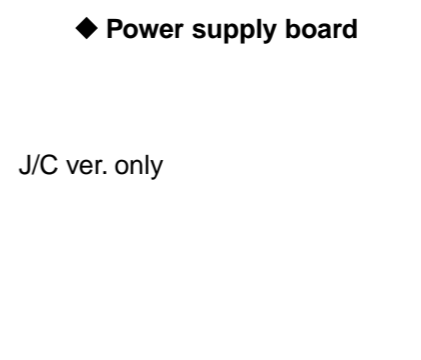
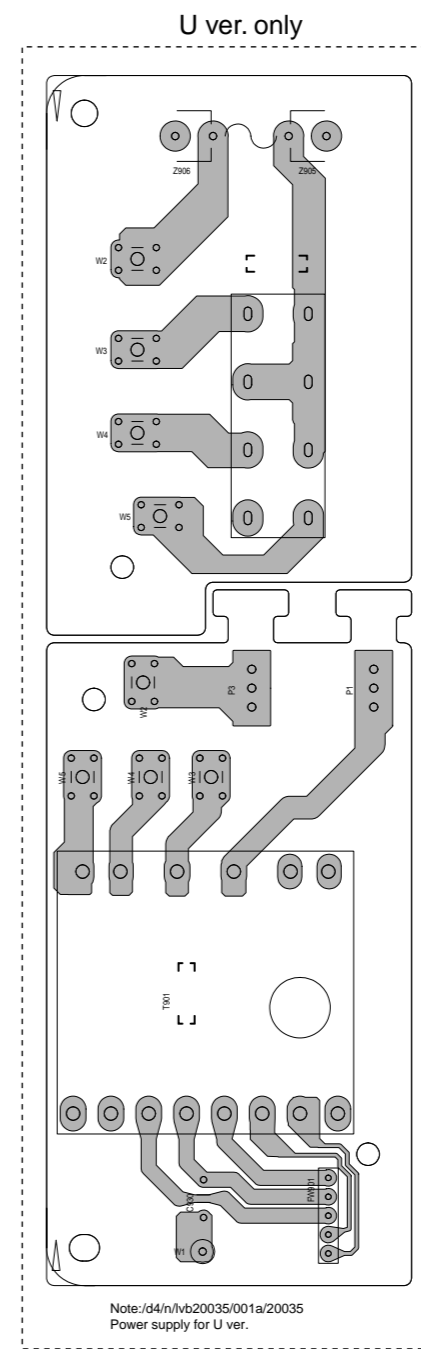
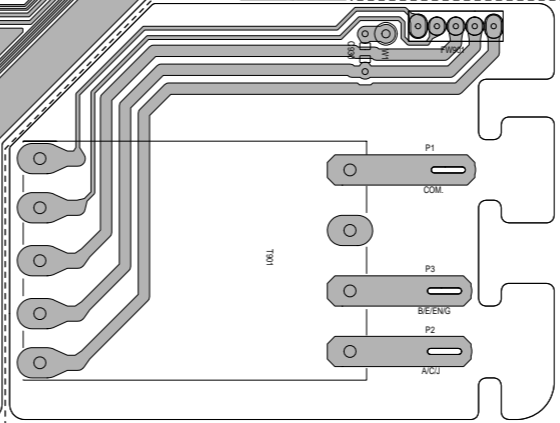
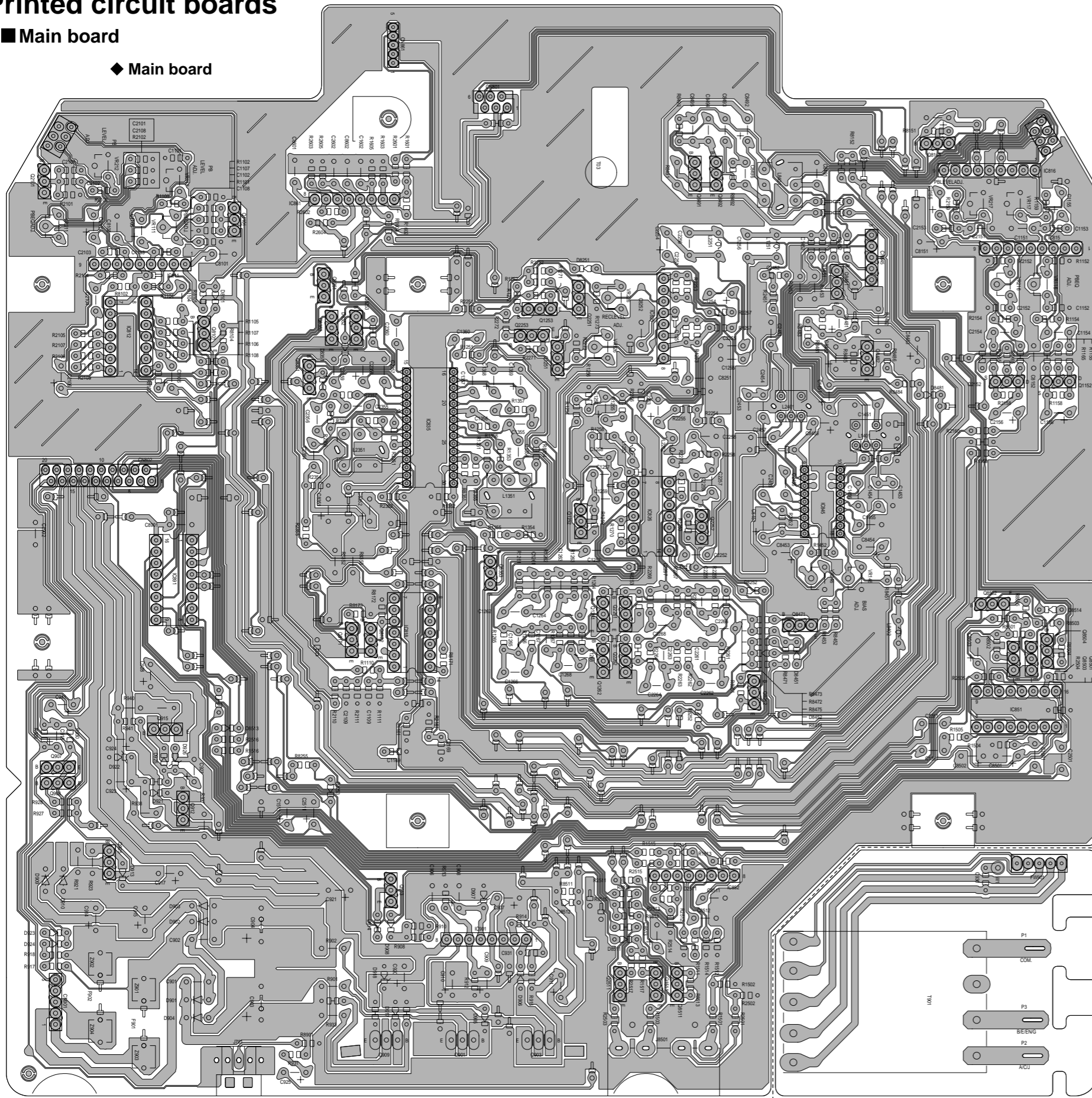
5

4

3

2

1



■ Sub board

5  
4  
3  
2  
1

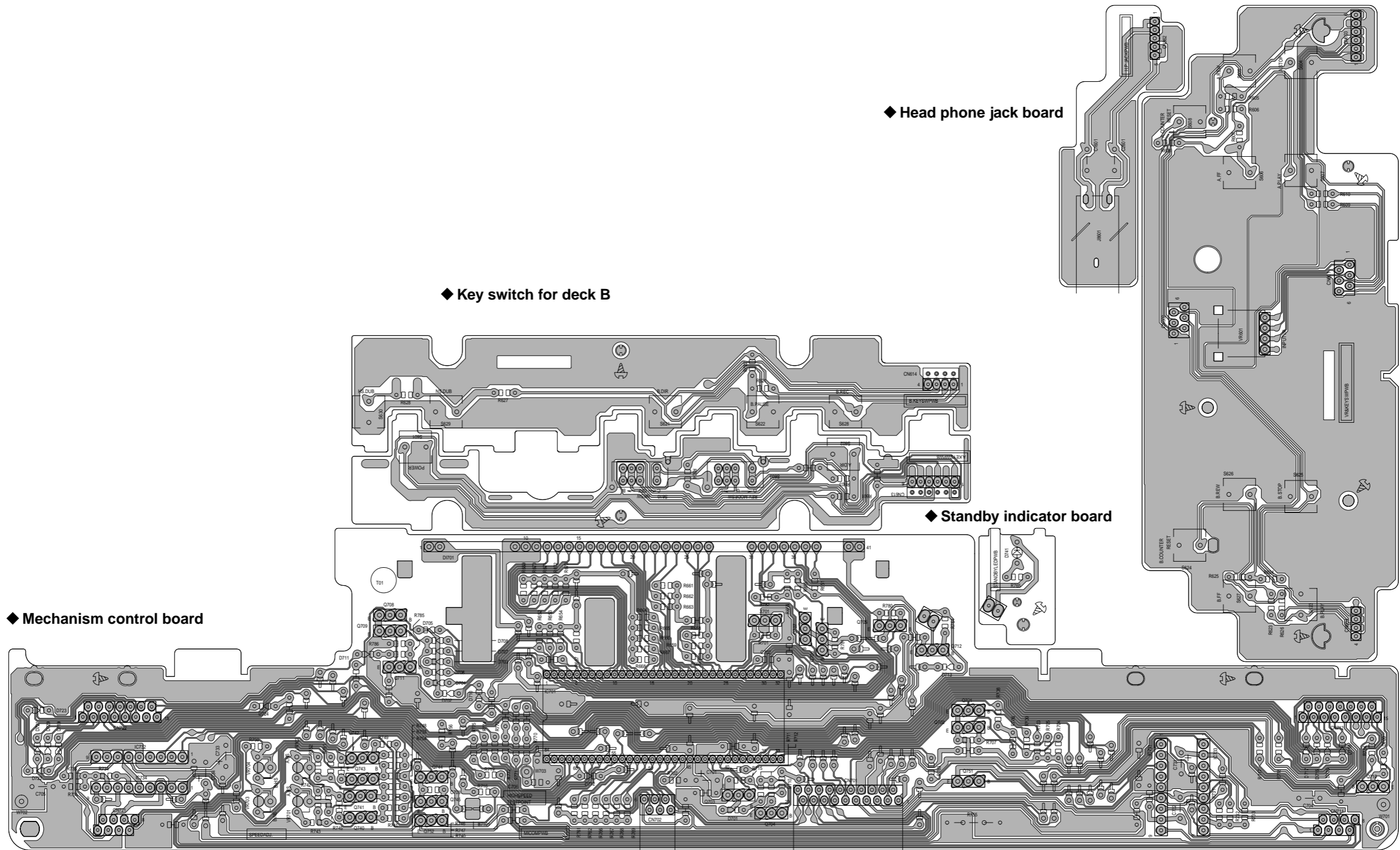
◆ Key switch board for deck A

◆ Head phone jack board

◆ Key switch for deck B

◆ Standby indicator board

◆ Mechanism control board



Note:/d3/t/vmw1437/002/1437